

# CV - Series Check Valves

## Check Valves with CF flanges

### Features

#### Design

Various configurations (CF16, CF40).  
All tube connections are TIG orbital welded.

#### Materials

Wetted area ..... 316L Stainless Steel  
Gasket ..... Viton, EPDM, Kalrez, Nitrile  
Surface finish .....  $Ra \leq 0.4\mu m$  ;  $Ra \leq 0.2\mu m$  on request

### Ratings

#### Cracking Pressure

|                   |        |
|-------------------|--------|
| CHK 1/3 PSI ..... | 23 mb  |
| CHK 1/2 PSI ..... | 34 mb  |
| CHK 1 PSI .....   | 70 mb  |
| CHK 2 PSI .....   | 138 mb |
| CHK 3 PSI .....   | 207 mb |
| CHK 5 PSI .....   | 345 mb |

#### Flow Coefficient

Cv ..... starting 1.1

#### Temperature

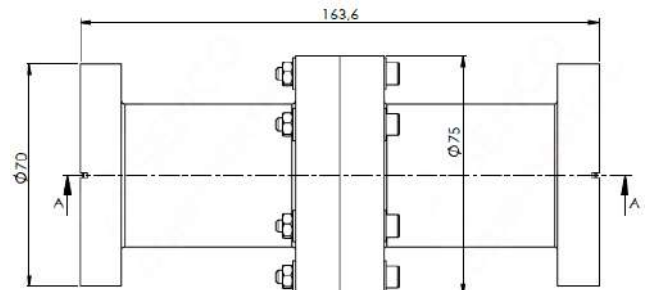
Operating ..... 0 °C to 120 °C, depending on the model

#### Pressure

Operating ..... Vaccum to 10 bar, depending on the model

#### Helium Leak Rate

External seating .....  $<5.10^{-10}$  atm cm<sup>3</sup>/s  
Internal seating .....  $<1.10^{-7}$  atm cm<sup>3</sup>/s



# CV Series - Check Valves with CF flanges

## Part Number Description

